

RECORDED CRIME&DISORDER

This report sets out the recorded crime and anti-social behaviour figures for April 2012-February 2013 compared to the same time period in 2011/12. The table below shows that total crime has reduced by 3.7%, equating to 398 fewer victims of crime.

Crime Statistics for Stockton April 2012 – February 2013

Table 1

Crime	2012/13	2011/12	Change	%Change
Violence	1993	1885	108	5.7%
Robbery	67	67	0	0%
Sexual	186	196	-10	-5.1%
House Burglary	502	520	-18	-3.5%
Other Burglary	676	730	-54	-7.4%
Theft of Motorvehicle/TWOC	193	252	-59	-23.4%
Theft from Motor vehicle	477	540	-63	-11.7%
Vehicle Interference	53	67	-14	-20.9%
Other Theft	3201	3257	-56	-1.7%
Criminal Damage	2067	2258	-191	-8.5%
Forgery & Fraud	232	254	-22	-8.7%
Drugs	453	504	-51	-10.7%
Other Crime	142	110	32	29.1%
TOTAL	10242	10640	-398	-3.7%
Violent Crime	2246	2148	98	4.6%
Vehicle Crime	670	792	-122	-15.4%
Acquisitive Crime	1239	1379	-140	-10.2%

The majority of crime categories are showing reductions with the exception of violence and Other Crime. Burglary offences have decreased, in particular Other Burglary category (-54 crimes) and positive reductions in acquisitive crime, criminal damage and vehicle crime.

Although violence is still showing an increase (+108 crimes), levels have started to reduce over the past two months, when violence was showing an increase of 133 crimes for end December (now 108 crimes).

ASB statistics for Stockton April 2012 – February 2013

Table 2

ASB Type	2012/13	2011/12	change	%change
AS21 Personal	3723	4491	-768	-16.9%
AS22 Nuisance	7141	8670	-1529	-17.6%
AS23 Environmental	299	714	-415	-58.1%
TOTAL	11163	13875	-2712	-19.5%

Table 2 shows that ASB also continues to reduce in all three ASB categories with a year to date reduction of 19.5%.

Crime/ASB rates per 1000 population across Tees Valley area

Table 3 shows the rate per thousand population for total crime and ASB across the Tees Valley area. This shows that Stockton continues to have the lowest rate per 1000 population for crime and closely behind Redcar for ASB.

Table 3

Rate per 1,000 population		
District	ASB	Total Crime
Hartlepool	67.90	64.40
Middlesbrough	77.85	92.28
Redcar&Cleveland	60.40	53.81
Stockton	60.80	53.39

The rates calculated have been generated using the 2011 population statistics as follows:-

Stockton – 191,800

Hartlepool – 92,100

Middlesbrough – 138,400

Redcar – 135,200

Breakdown of Publicly Reported and Police Generated Crime

The following two tables relate to publicly reported crime. These are crimes that are reported by the public. A separate record is kept of 'Police Generated Crime', ie those crimes that are recorded following proactive policing such as drug raids, public order arrests.

During this period both ways of recording are showing similar decreases, with reduction of 4.2% for public reported crime and 3.7% for police generated.

Table 4

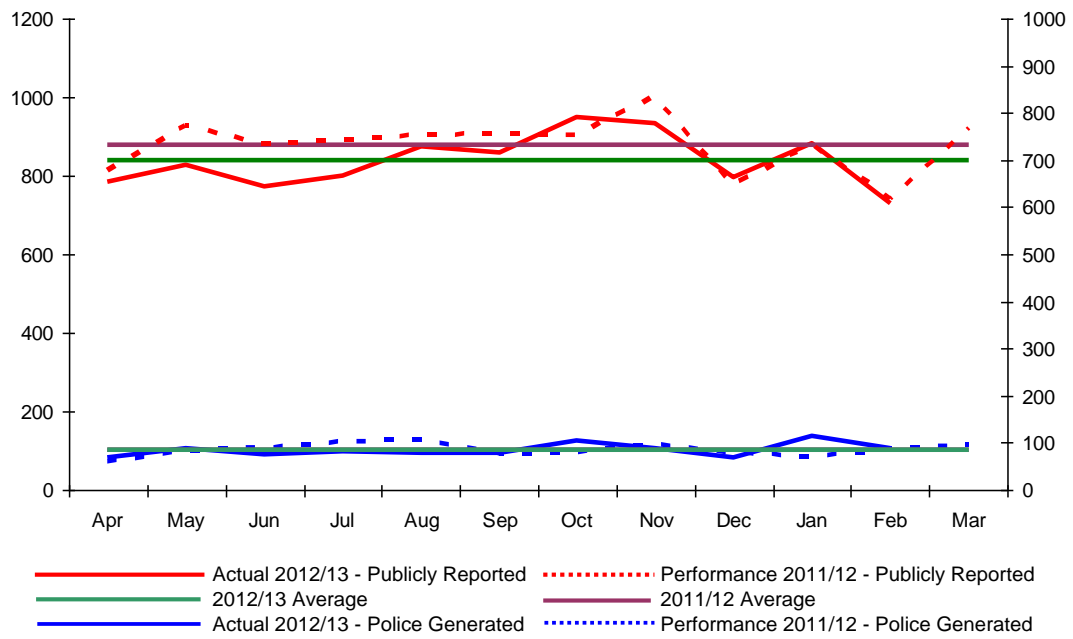
Crime Statistics	April 2012 - February 2013			
	2012/13	2011/12	Change	% Change
Publicly Reported				
Violence against the person	1702	1623	79	4.9%
Violence with injury	1011	1021	-10	-1.0%
Violence without injury	691	602	89	14.8%
Sexual offences	185	196	-11	-5.6%
Rape	46	52	-6	-11.5%
Other Sexual offences	139	144	-5	-3.5%
Acquisitive Crime	5269	5544	-275	-5.0%
Burglary - Domestic	502	520	-18	-3.5%
Burglary - Non domestic	676	730	-54	-7.4%
Robbery - personal	59	57	2	3.5%
Robbery - Business	8	10	-2	-20.0%
Vehicle Crime (Inc Inter.)	723	859	-136	-15.8%
Shoplifting	1279	1120	159	14.2%
Other Acquisitive	2022	2248	-226	-10.1%
Criminal damage and Arson	2055	2251	-196	-8.7%
Publicly reported offences	9211	9614	-403	-4.2%

Table 4 also provides details relating to shoplifting, which continues to show an increase (+14.2%/159 more crimes). Robbery is also split into the two categories, which highlights slight increase in robbery personal (+2 crimes).

Table 5

Crime Statistics	Year to Date			
	2012/13	2011/12	Change	% Change
Police Generated				
Public Disorder	321	266	55	20.7%
Drug offences	453	504	-51	-10.1%
Trafficking of drugs	89	99	-10	-10.1%
Possession/Use of drugs	364	405	-41	-10.1%
Crime Prevented / Disrupted	113	104	9	8.7%
Other State based / Non Victim	43	44	-1	-2.3%
Police Generated offences	930	918	12	1.3%
Fraud and Forgery	101	108	-7	-6.5%
Total Recorded Crime	10242	10640	-398	-3.7%

Publicly reported and Police Generated Offences Tracking Report



Police generated and publicly reported crime levels in comparison within the Tees Valley area.

The final two tables (Table 6&7) relate to the number of police generated and public reported crimes, with rates per 1000 population in brackets.

Table 6

Crime Statistics	April 2012 - February 2013			
	Stockton	Hartlepool	Middlesbrough	Redcar
Publicly Reported				
Violence against the person	1702 (8.87)	1156 (12.55)	2168 (15.66)	1065 (7.87)
Violence with injury	1011 (5.27)	678 (7.36)	1264 (9.13)	673 (4.97)
Violence without injury	691 (3.60)	478 (5.19)	904 (6.53)	392 (2.89)
Sexual offences	185 (0.96)	69 (0.74)	158 (1.14)	86 (0.63)
Rape	46 (0.23)	37 (0.40)	46 (0.33)	25 (0.18)
Other Sexual offences	139 (0.72)	32 (0.34)	112 (0.80)	61 (0.45)
Acquisitive Crime	5269 (27.47)	3015 (32.73)	6822 (49.29)	3609 (26.69)
Burglary - Domestic	502 (2.61)	271 (2.94)	898 (6.48)	342 (2.52)
Burglary - Non domestic	676 (3.52)	354 (3.80)	668 (4.82)	584 (4.31)
Robbery - personal	59 (0.30)	24 (0.26)	125 (0.90)	22 (0.16)
Robbery - Business	8 (0.04)	8 (0.08)	9 (0.06)	5 (0.03)
Vehicle Crime (Inc Inter.)	723 (3.76)	360 (3.90)	1258 (9.08)	605 (4.47)
Shoplifting	1279 (6.66)	694 (7.53)	1739 (12.56)	787 (5.82)
Other Acquisitive	2022 (10.54)	961 (10.43)	2125 (15.35)	1264 (9.34)
Criminal damage and Arson	2055 (10.71)	1264 (13.72)	2126 (15.36)	1826 (13.50)
Publicly reported offences	9211 (48.02)	5161 (56.03)	11274 (81.45)	6586 (48.71)

The table above shows that Stockton continues to have the lowest crime per 1000 population for total publicly reported crimes with Middlesbrough the worst performing.

Redcar has lowest rates for majority of crime categories with Middlesbrough the worst performing.

Stockton however is second best performing in majority of crime types and as table shows, the best for Burglary Non domestic, Vehicle Crime, and Criminal Damage/Arson.

Table 7

Crime Statistics	April 2012 - February 2013			
	Stockton	Hartlepool	Middlesbrough	Redcar
Police Generated				
Public Disorder	321(1.67)	198 (2.14)	491 (3.54)	212 (1.56)
Drug offences	453(2.36)	386 (4.19)	710 (5.13)	310 (2.29)
Trafficking of drugs	89 (0.46)	83 (0.90)	68 (0.49)	61 (0.45)
Possession/Use of drugs	364 (1.89)	303 (3.28)	642 (4.63)	249 (1.84)
Crime Prevented / Disrupted	113 (0.58)	95 (1.03)	160 (1.15)	92 (0.68)
Other State based / Non Victim	43 (0.22)	32 (0.34)	54 (0.39)	24 (0.17)
Police Generated offences	930 (4.84)	711 (7.71)	1415 (10.22)	638 (4.71)
Fraud and Forgery	101 (0.52)	60 (0.65)	83 (0.59)	52 (0.38)
Total Recorded Crime	10242 (53.39)	5932 (64.40)	12772 (92.28)	7276 (53.81)

END.